

# servosis

*Testing Machines*



## Hydraulic servoactuators CH9 SERIES



Servosis develops and manufactures CH9 servoactuators, specifically designed for dynamic tests up to 100 Hz.

Servosis, more than three decades of experience.

[www.servosis.com](http://www.servosis.com)

## MODEL CH-9

Hydraulic hydrostatic actuators.

### Custom designs:

- Servosis personalizes the actuators to meet customer requirements, choosing the suitable stroke, load capacity, bearing pieces, transducers, etc.
- They are fully designed at Servosis, so that we can adapt them to customer requirements without depending on third parties.

### Pressure sealing system:

- They have no joints in the rod nor in the rod covers.
- They have a pressure injector system that keeps the rod floating in an oil film, with no friction.

### Quick response:

- Linear speed up to 2 m/sec.
- Continuous working frequency up to 50 Hz.
- Maximum working frequency 100 Hz.

### Robustness and accuracy:

- High quality transducers:
  - HBM
  - Temposonics
- Moog servo valves
- Ceramic coating rods, which makes them practically immune to wear



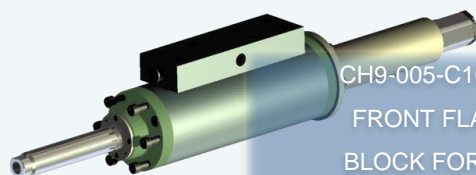
CH9-250-C100-200  
FRONT AND BACK FLANGES  
BLOCK FOR HIGH RESPONSE  
SERVOVALVE



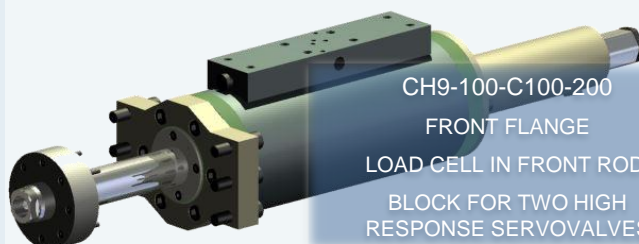
MOD. CH9- 020 – C200-200.  
INSTALLED ON A SLIDING SUPPORT FOR GROOVED  
BENCH  
CENTRAL TILTING SYSTEM WITH FORCE APPLICATION  
ANGLE BLOCK



MOD. CH9- 020 – C100-200.  
INSTALLATION ON A SUPPORTING SQUARE, WITH  
ADJUSTMENT OF:  
• HEIGHT  
• SPIN  
• LOAD APPLICATION ANGLE, THROUGH A CENTRAL  
BLOCKING TILTING SYSTEM



CH9-005-C100-200  
FRONT FLANGE  
BLOCK FOR TWO  
SERVOVALVES



CH9-100-C100-200  
FRONT FLANGE  
LOAD CELL IN FRONT ROD.  
BLOCK FOR TWO HIGH  
RESPONSE SERVOVALVES

## SPECIFICATIONS

	Working pressure (bar)	Maximum speed (m/sg)	Maximum working frequency (Hz)	Peak frequency (Hz)	External Ø (mm)	Rod Ø (mm)	Female thread in the rod end	Maximum length (mm)	Minimum length (mm)
CH9-5kN	200 bar	2 m/sg	50 Hz	100 Hz	118	36	M20 X 1,5	950	750
CH9-10kN					128	36	M20 X 1,5	950	750
CH9-20kN					128	36	M20 X 1,5	950	750
CH9-50kN					138	45	M24 X 2	950	750
CH9-100kN					170	50	M30 X 2	960	760
CH9-150kN					175	63	M33 X 2	960	760
CH9-200kN					220	80	M42X2	1050	850
CH9-250kN					220	80	M48 X 2	1050	850

These specifications correspond to 200 mm stroke actuators. Please consult for other models.

These measures correspond to the actuators without accesories.

We can build other sizes and capacities upon request.

## ACCESORIES

DISPLACEMENT TRANSDUCER	LVDT	MAGNETOESTRICTIE Digital output signal SSI	MAGNETOESTRICTIVE Analog output signal +/-10VDC
LOAD CELL	Standard commercial equipment, as HBM U10M or similar.	Servosis special designs.	
SERVOVALVE	MOOG. Drive signal in voltage or current. Optional: <ul style="list-style-type: none"><li>• Block for two servovalves, to work in high/low flow.</li><li>• Sandwich valves for chambers locking, pressure and return lock.</li><li>• Hydraulic accumulators for pressure and return lines.</li></ul>		
ASSEMBLY SYSTEMS	Designed for each project. Front or back flange, tilted systems, swivels.		

## REFERENCE

CH 9-	---	C---	P---
-------	-----	------	------

### MAXIMUM LOAD (kN)

005/010/020/050/100/150/200/250  
For other capacities, please consult.

### STROKE (mm )

NOTE: 100 = +/- 50mm

050/100/150/200/250/300/  
For other strokes, please consult.

### WORKING PRESSURE (BAR)

200  
For other pressures, please consult.